

# Indoor Ceiling Wireless Access Point

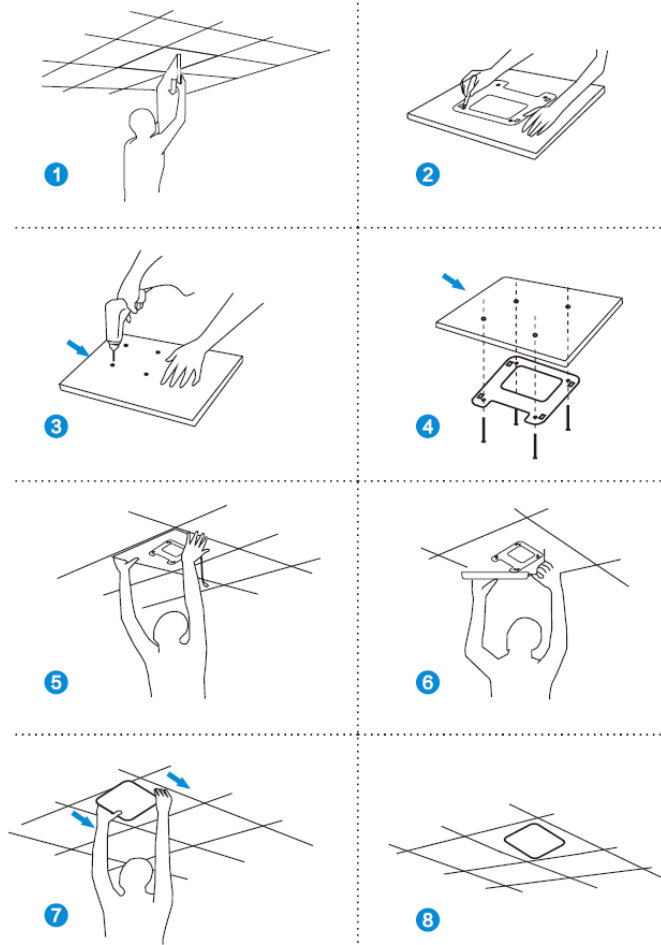
## Quick Installation Guide

### Packing List

Please check the following items after unpacking, if any missing, please contact your local dealer.

Items	Quantity
Access Point	1 pc
Mounting Accessory	1 set
Ethernet Cable	1 pc
Quick Installation Guide	1 pc

### Product Installation



## Quick Installation Guide

### Configuration

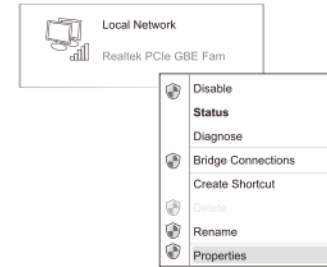
PC connect AP by wireless (SSID: Wireless 2.4G\_XXXXXX, Key: 66666666) or wire.

Set PC network IP to 192.168.188.X (X: 2~200), same network segment as AP, subnet mask: 255.255.255.0

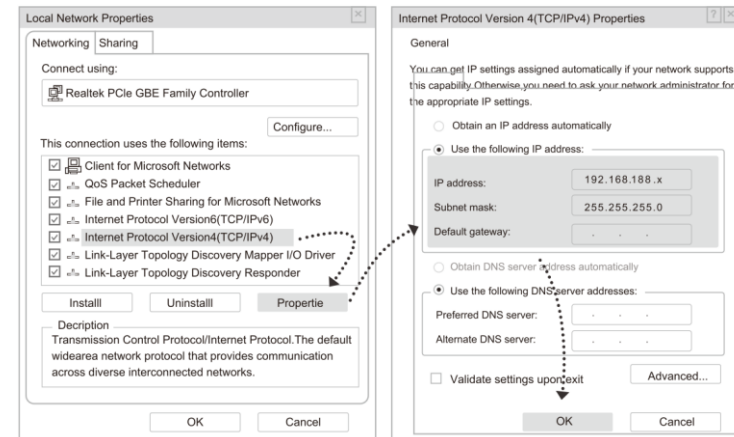
#### Wireless:



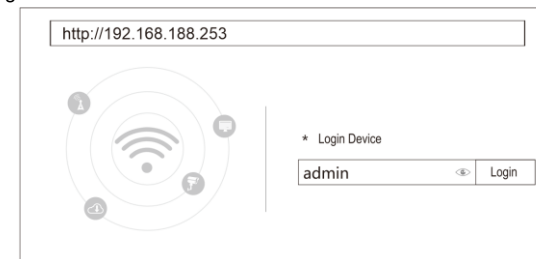
#### Wired:



#### Set static IP for PC:



Use browser to access <http://192.168.188.253>, pop up the login page, input the login password: admin, and enter into the home page.



Version: V1.0, updated 2023-04-27.

The information in this document is subject to change without notice.

Every effort has been made in the preparation of this document to ensure accuracy of the contents, but all statements, information, and recommendations in this document do not constitute a warranty of any kind, express or implied.